

Norwich to Tilbury

Volume 6: Environmental Statement

Document: 6.13.F6 Environmental Statement Figure 13.6 - Landscape Character Types and Landscape Character Areas

Final Issue A

August 2025

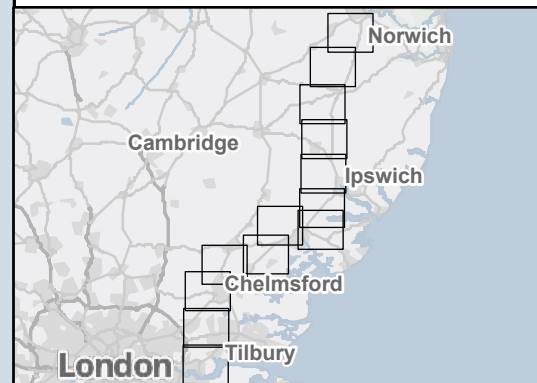
Planning Inspectorate Reference: EN020027

Infrastructure Planning (Applications: Prescribed Forms and Procedure) Regulations 2009 Regulation 5(2)(a)



- ☐ Order limits
- ☐ Page

Notes: © Crown copyright and database rights 2025 Ordnance Survey AC000808122, Contains public sector information licensed under the Open Government Licence v3.0, © National Grid UK



A	Aug 2025	FOR DCO APPLICATION	SS	AF	KB
Rev	Date	Description	Drawn	Check	Approv

nationalgrid PROJECT:
Norwich to
Tilbury

<p>Planning Inspectorate App Number: EN020027 Regulation 5(2)(a)</p>
--

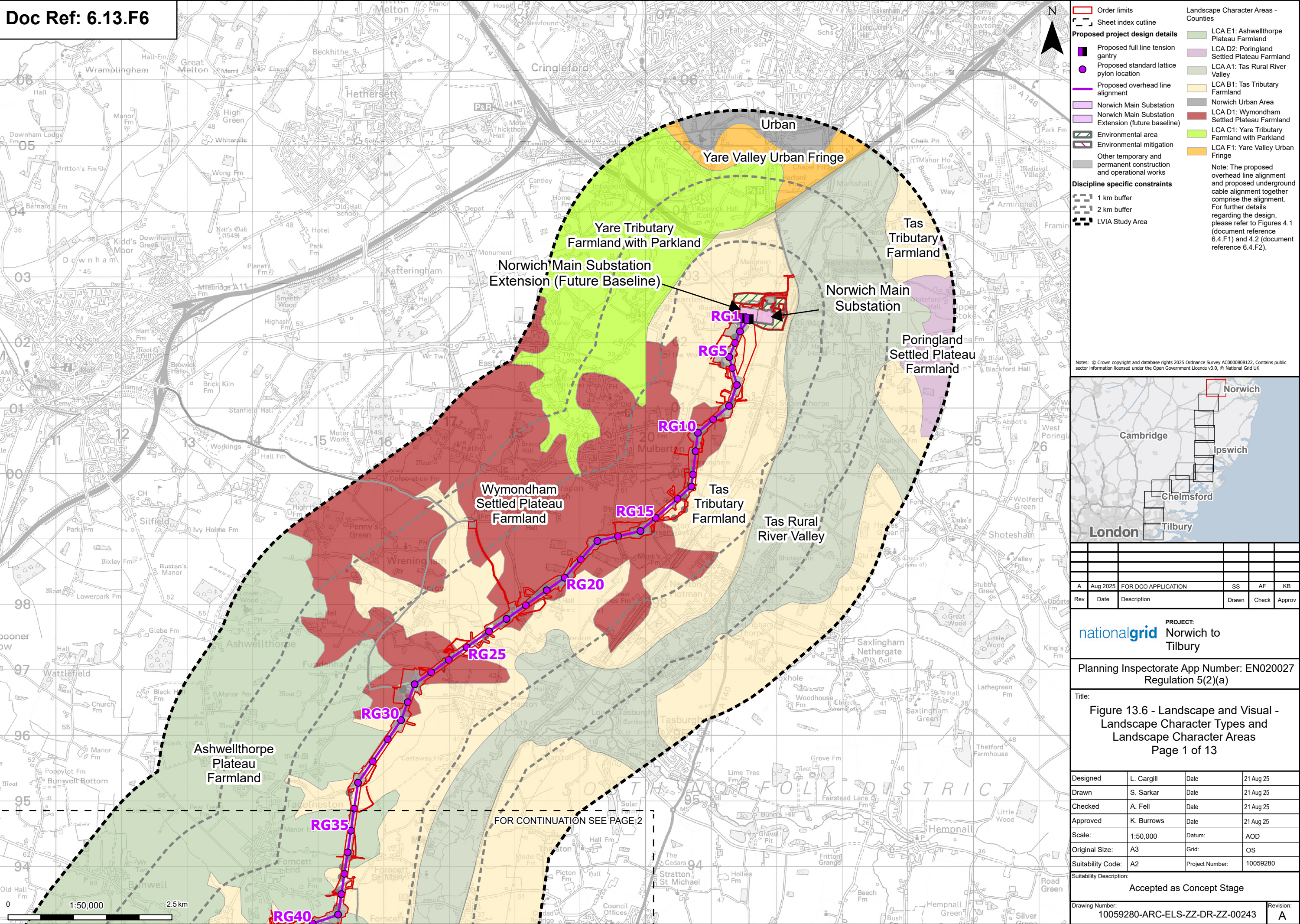
Title: Figure 13.6 - Landscape and Visual -
Landscape Character Types and
Landscape Character Areas
Overview

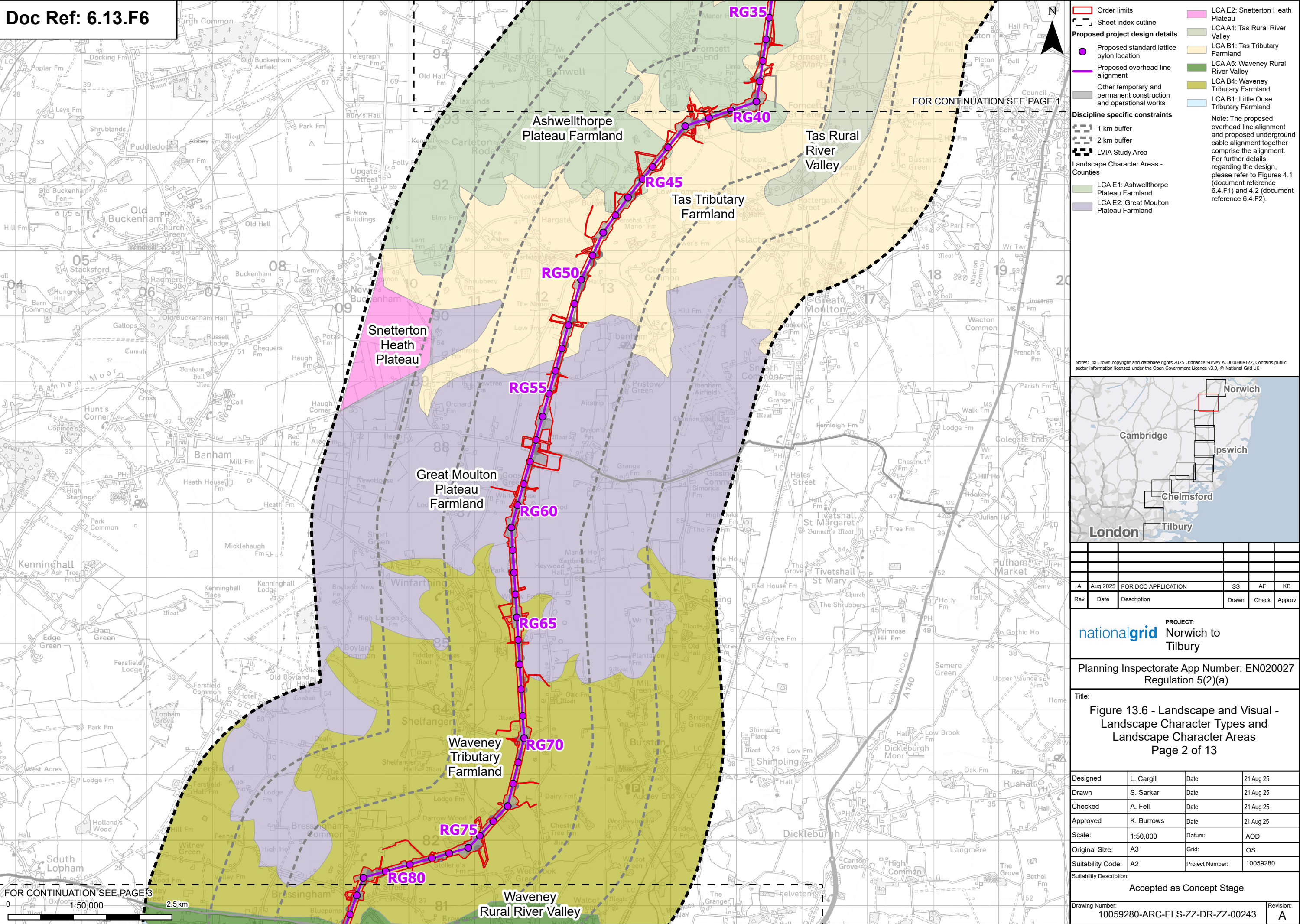
Designed	L. Cargill	Date	21 Aug 25
Drawn	S. Sarkar	Date	21 Aug 25
Checked	A. Fell	Date	21 Aug 25
Approved	K. Burrows	Date	21 Aug 25
Scale:	1:500,000	Datum:	AOD
Original Size:	A3	Grid:	OS
Suitability Code:	A2	Project Number:	10059280

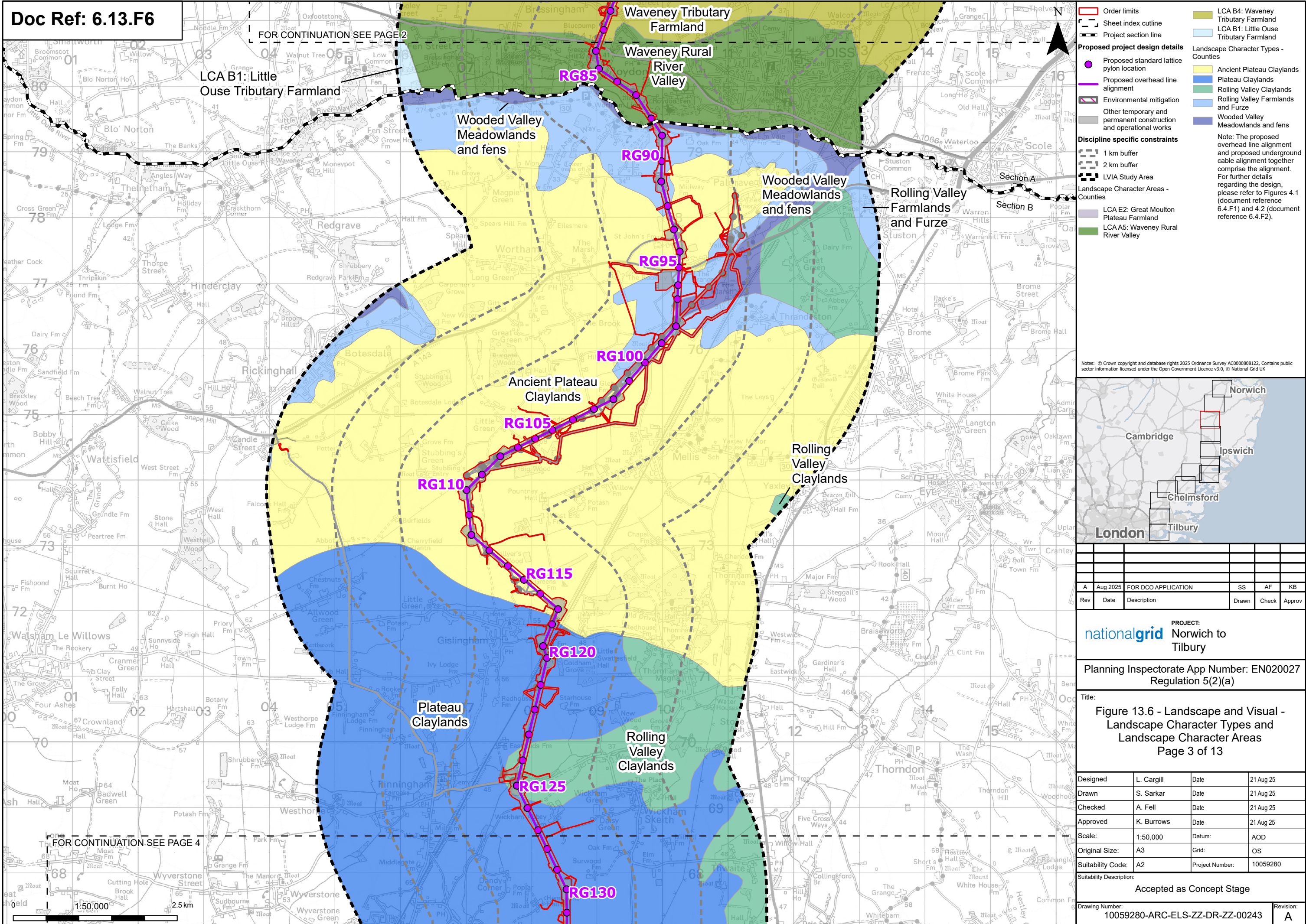
Suitability Description:

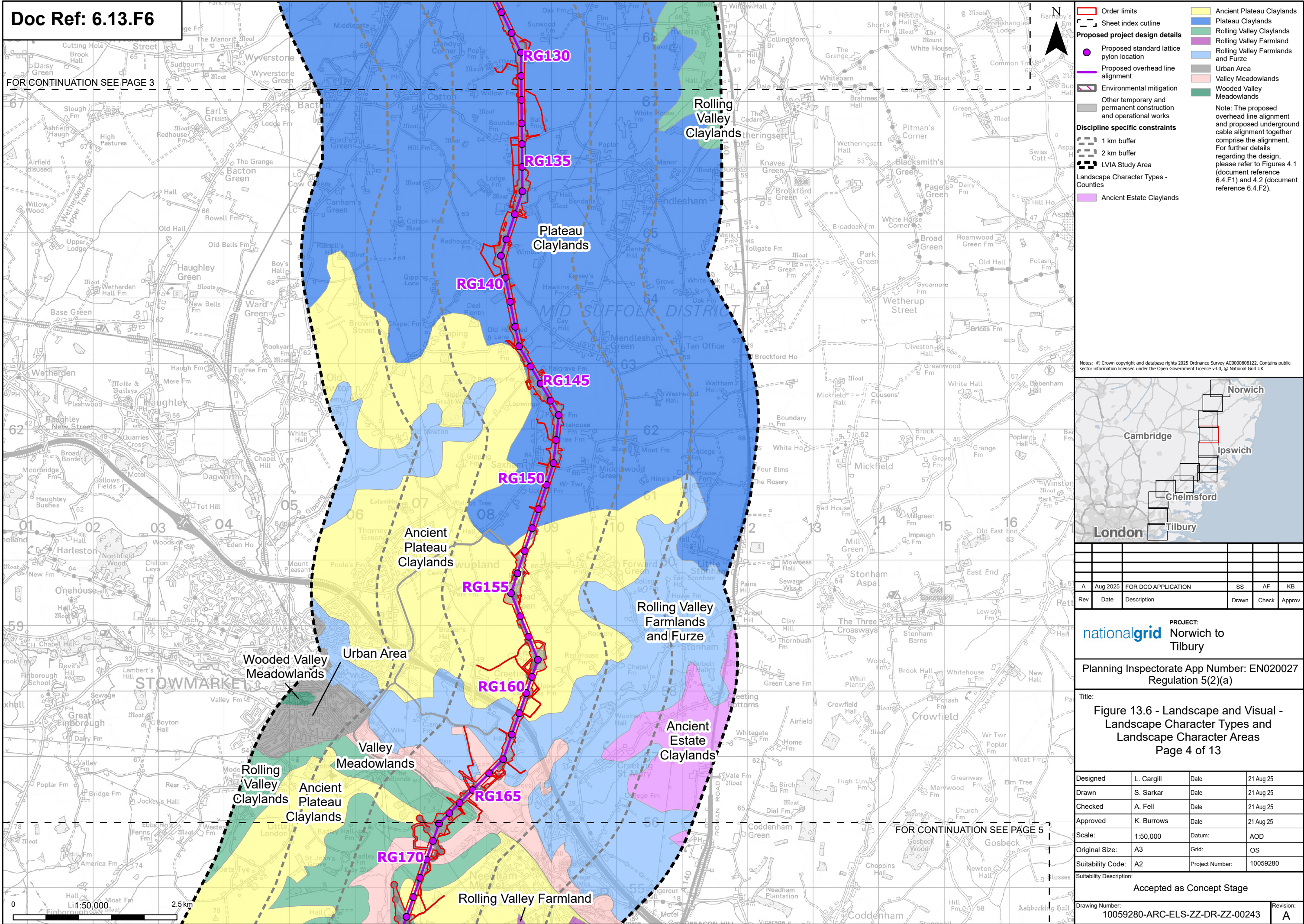
Accepted as Concept Stage

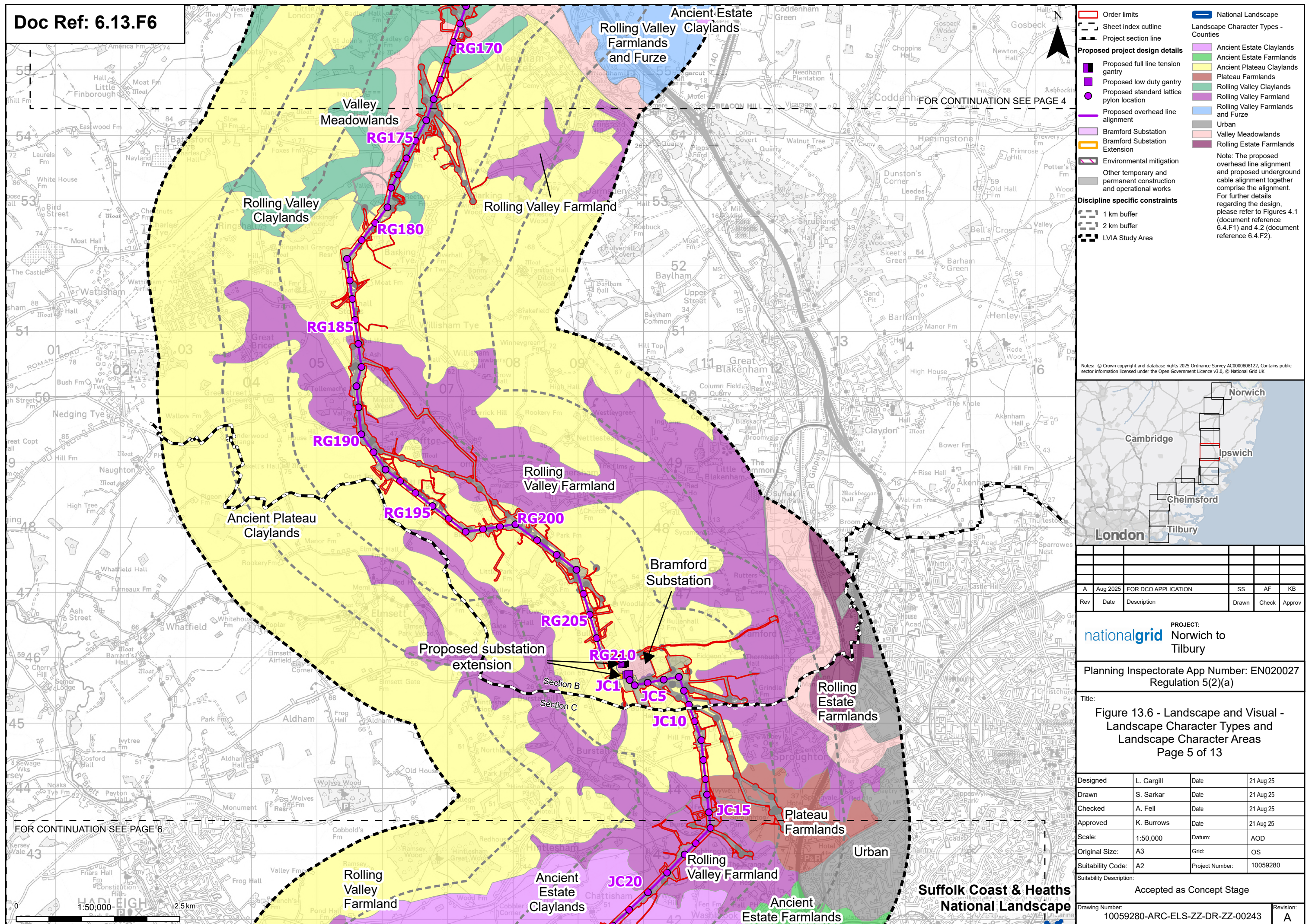
Drawing Number: 10059280-ARC-ELS-ZZ-DR-ZZ-00243	Revision: A
--	----------------

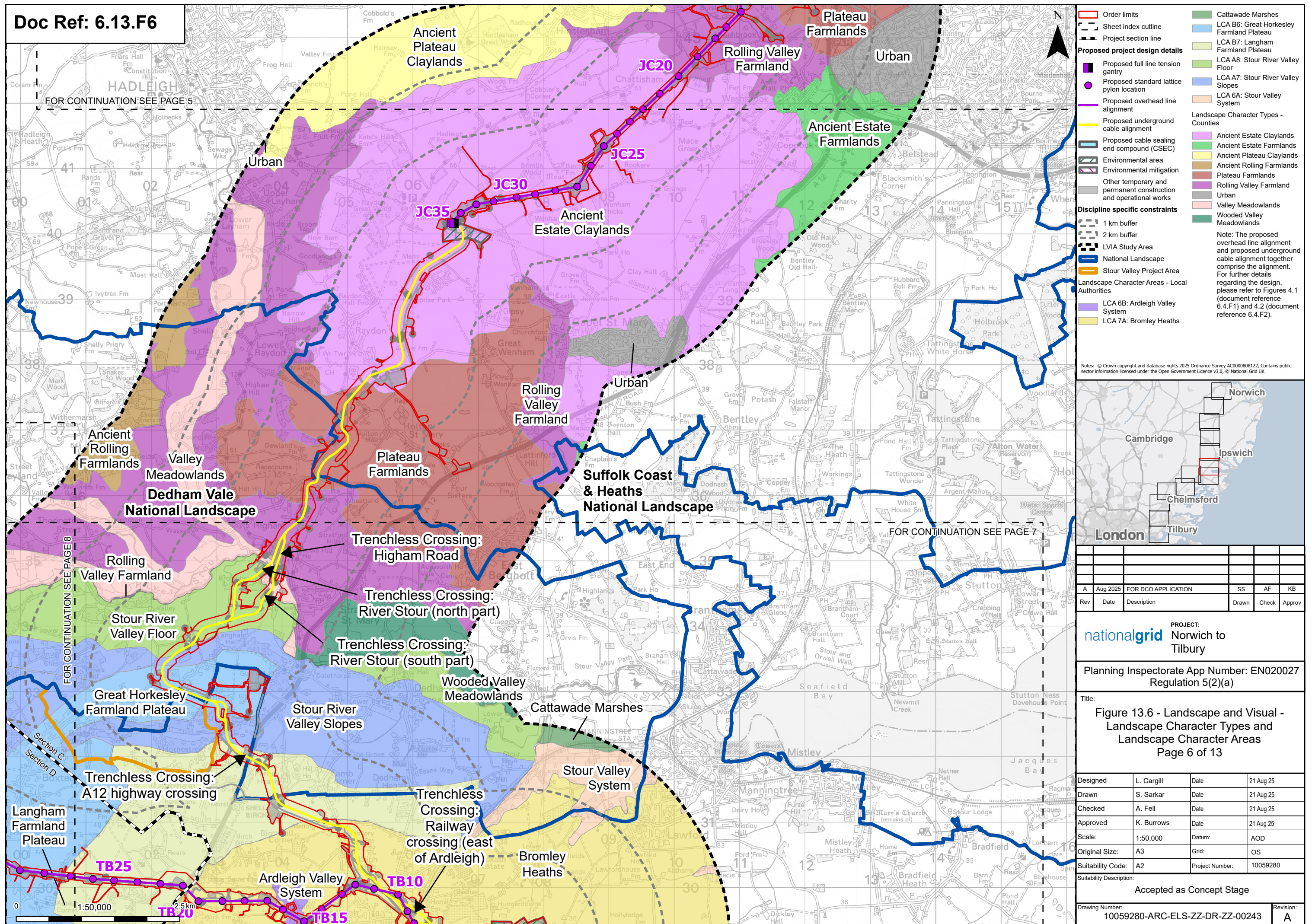


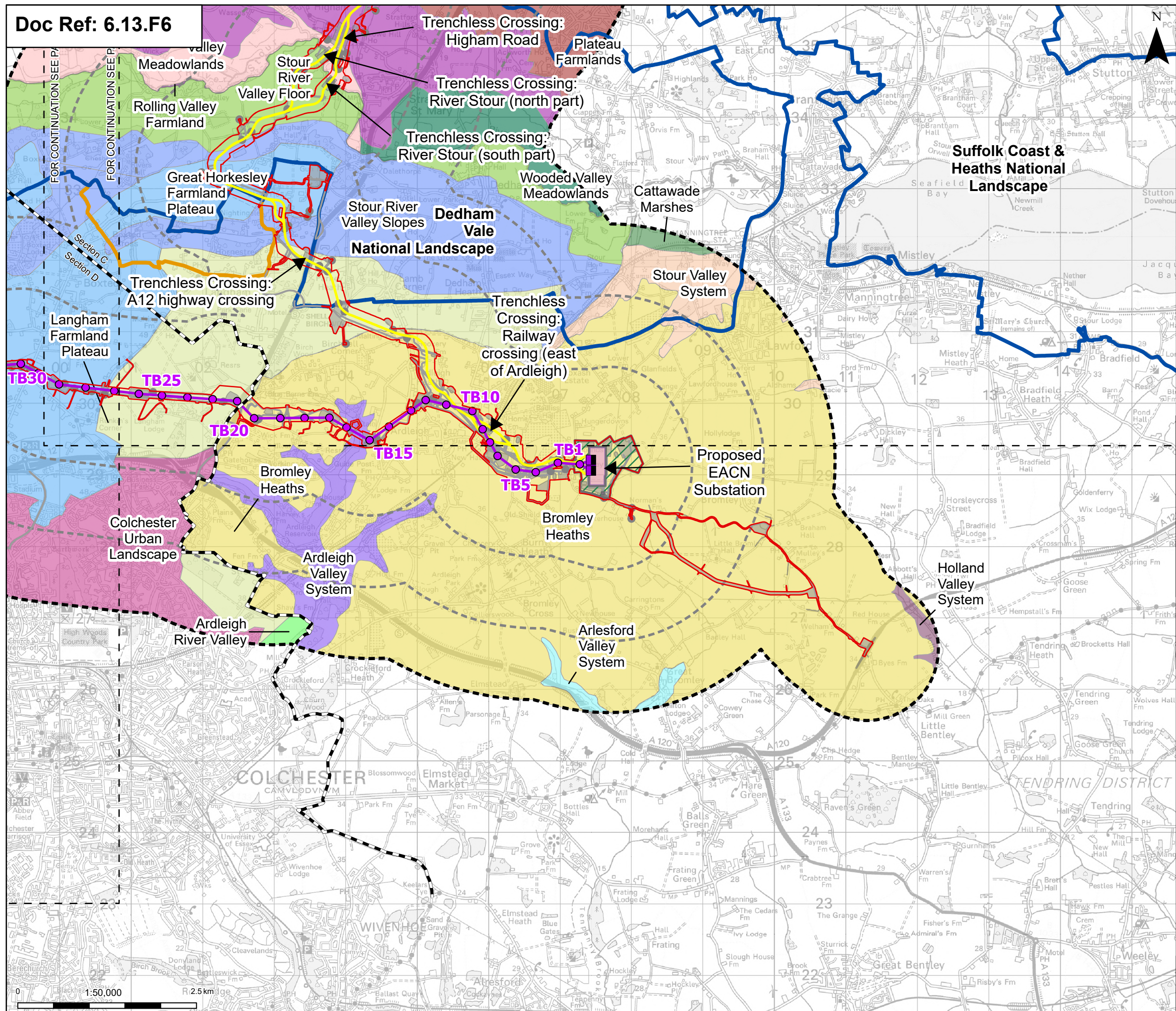












Order limits

Sheet index outline

Project section line

Proposed project design details

- Proposed full line tension gantry
- Proposed standard lattice pylon location
- Proposed overhead line alignment
- Proposed underground cable alignment
- Proposed DNO Substation
- Proposed East Anglia Connection Node (EACN) Substation
- Environmental area
- Other temporary and permanent construction and operational works

Discipline specific constraints

- 1 km buffer
- 2 km buffer
- LVIA Study Area
- National Landscape
- Stour Valley Project Area

Landscape Character Areas - Local Authorities

- Ardleigh River Valley
- LCA 6B: Ardleigh Valley System

LCA 6C: Arlesford Valley System

LCA 7A: Bromley Heaths

Cattawade Marshes

Colchester Urban Landscape

LCA B6: Great Horkeley Farmland Plateau

Holland Valley System

LCA B7: Langham Farmland Plateau

LCA A8: Stour River Valley Floor

LCA A7: Stour River Valley Slopes

LCA 6A: Stour Valley System

Landscape Character Types - Counties

- Plateau Farmlands
- Rolling Valley Farmland
- Valley Meadowlands
- Wooded Valley Meadowlands

Note: The proposed overhead line alignment and proposed underground cable alignment together comprise the alignment. For further details regarding the design, please refer to Figures 4.1 (document reference 6.4.F1) and 4.2 (document reference 6.4.F2).

Notes: © Crown copyright and database rights 2025 Ordnance Survey AC0000808122. Contains public sector information licensed under the Open Government Licence v3.0. © National Grid UK

Rev	Date	Description	Drawn	Check	Approv
A	Aug 2025	FOR DCO APPLICATION	SS	AF	KB

PROJECT:

nationalgrid Norwich to Tilbury

Planning Inspectorate App Number: EN020027

Regulation 5(2)(a)

Title:

Figure 13.6 - Landscape and Visual - Landscape Character Types and Landscape Character Areas

Page 7 of 13

Designed	L. Cargill	Date	21 Aug 25
Drawn	S. Sarkar	Date	21 Aug 25
Checked	A. Fell	Date	21 Aug 25
Approved	K. Burrows	Date	21 Aug 25
Scale:	1:50,000	Datum:	AOD
Original Size:	A3	Grid:	OS
Suitability Code:	A2	Project Number:	10059280

Suitability Description:

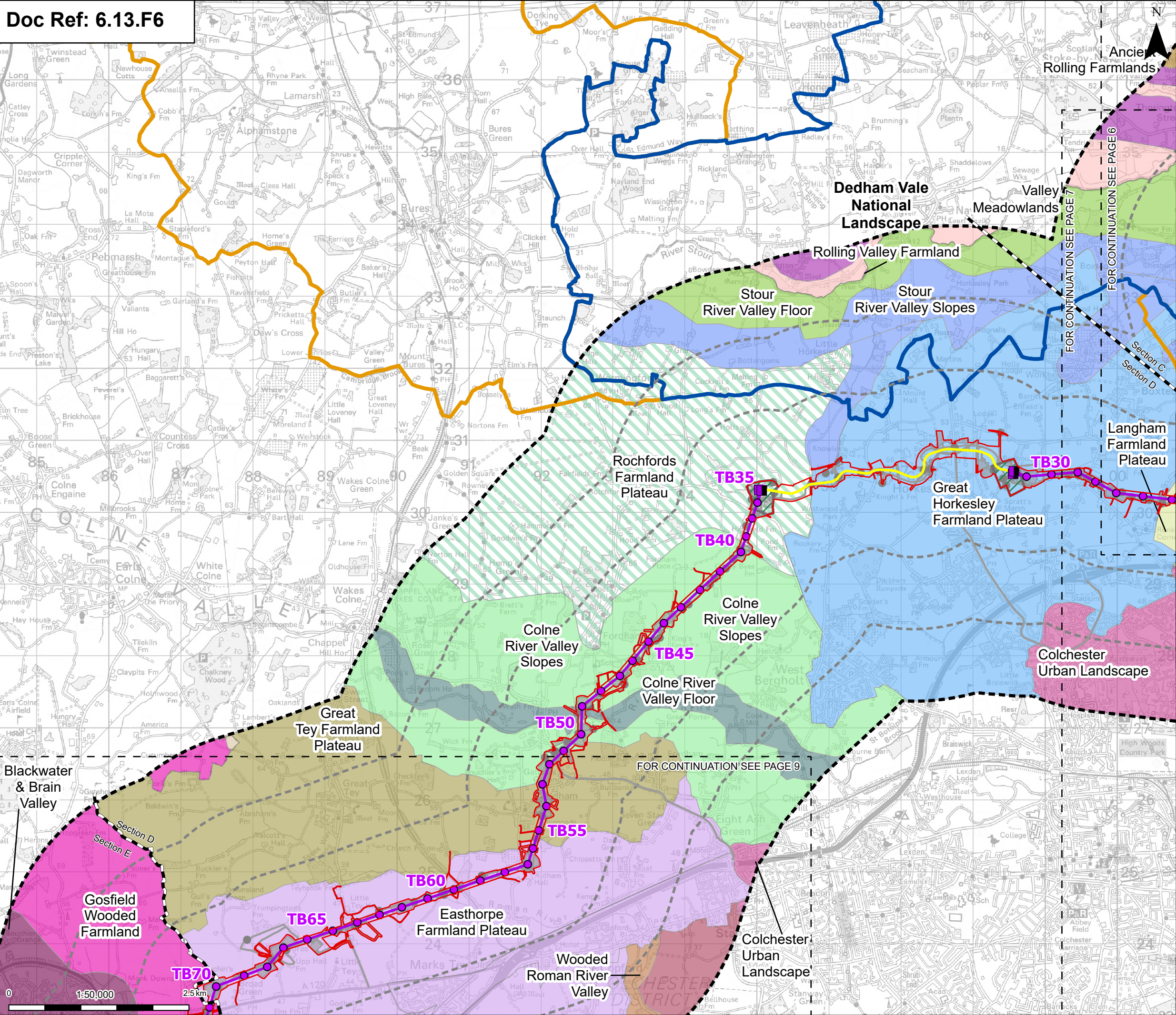
Accepted as Concept Stage

Drawing Number:

Revision:

10059280-ARC-ELS-ZZ-DR-ZZ-00243

A



Order limits

- Sheet index outline
- Project section line

Proposed project design details

- Proposed full line tension gantry
- Proposed standard lattice pylon location
- Proposed overhead line alignment
- Proposed underground cable alignment
- Proposed cable sealing end compound (CSEC)
- Environmental area
- Environmental mitigation
- Other temporary and permanent construction and operational works

Discipline specific constraints

- 1 km buffer
- 2 km buffer
- LVIA Study Area
- National Landscape
- Stour Valley Project Area

Landscape Character Areas - Counties

- Colne Valley
- Gosfield Wooded Farmland
- LCA C6: Blackwater & Brain Valley

Landscape Character Types - Counties

- Ancient Rolling Farmlands
- Rolling Valley Farmland
- Valley Meadows

Landscape Character Areas - Local Authorities

- Colchester Urban Landscape
- LCAA4: Colne River Valley Floor
- LCAA5: Colne River Valley Slopes
- LCA B2: Easthorpe Farmland Plateau

Notes: © Crown copyright and database rights 2025 Ordnance Survey AC000080122, Contains public sector information licensed under the Open Government Licence v3.0, © National Grid UK



A	Aug 2025	FOR DCO APPLICATION	SS	AF	KB
Rev	Date	Description	Drawn	Check	Approv

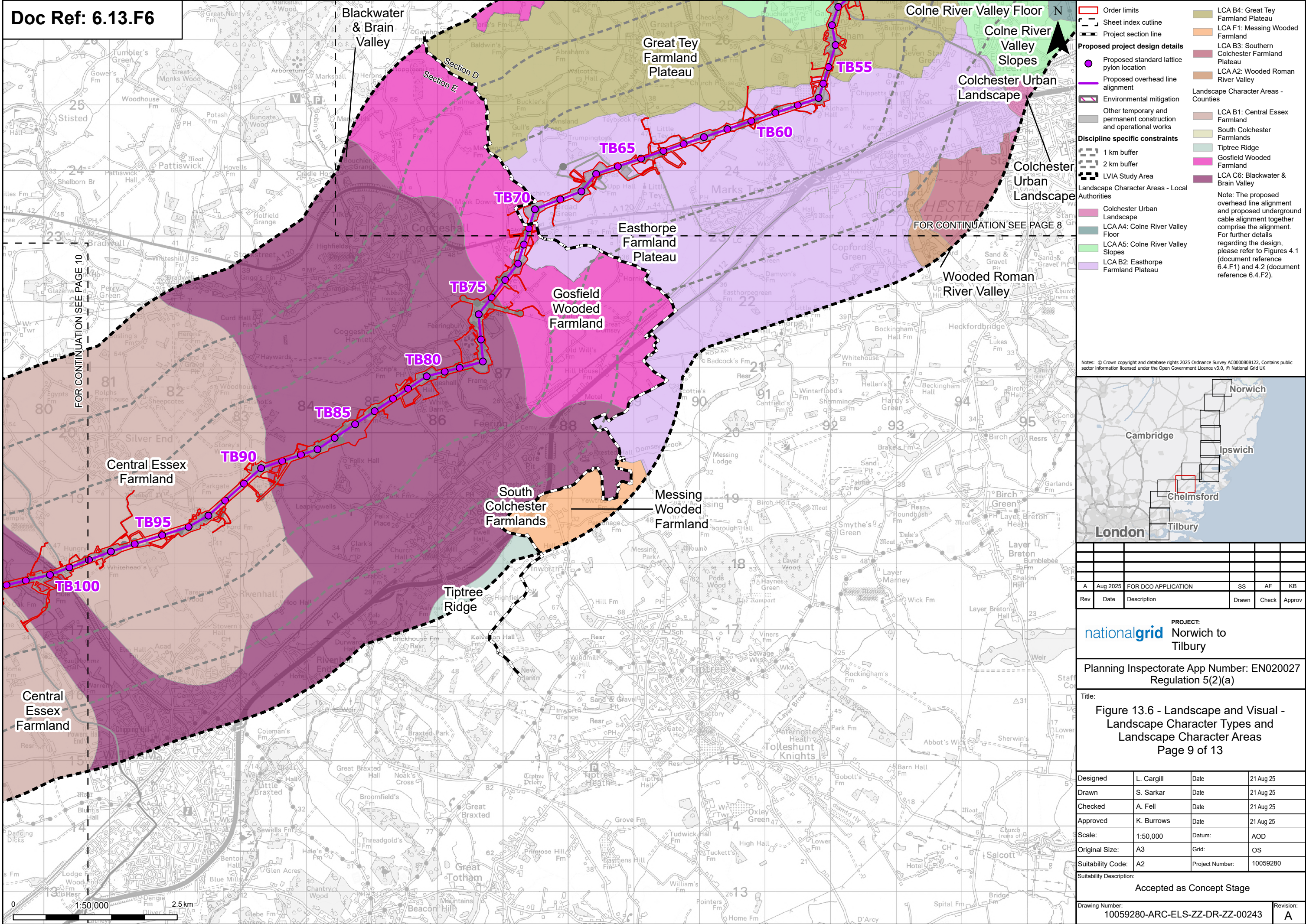
PROJECT:
nationalgrid Norwich to Tilbury

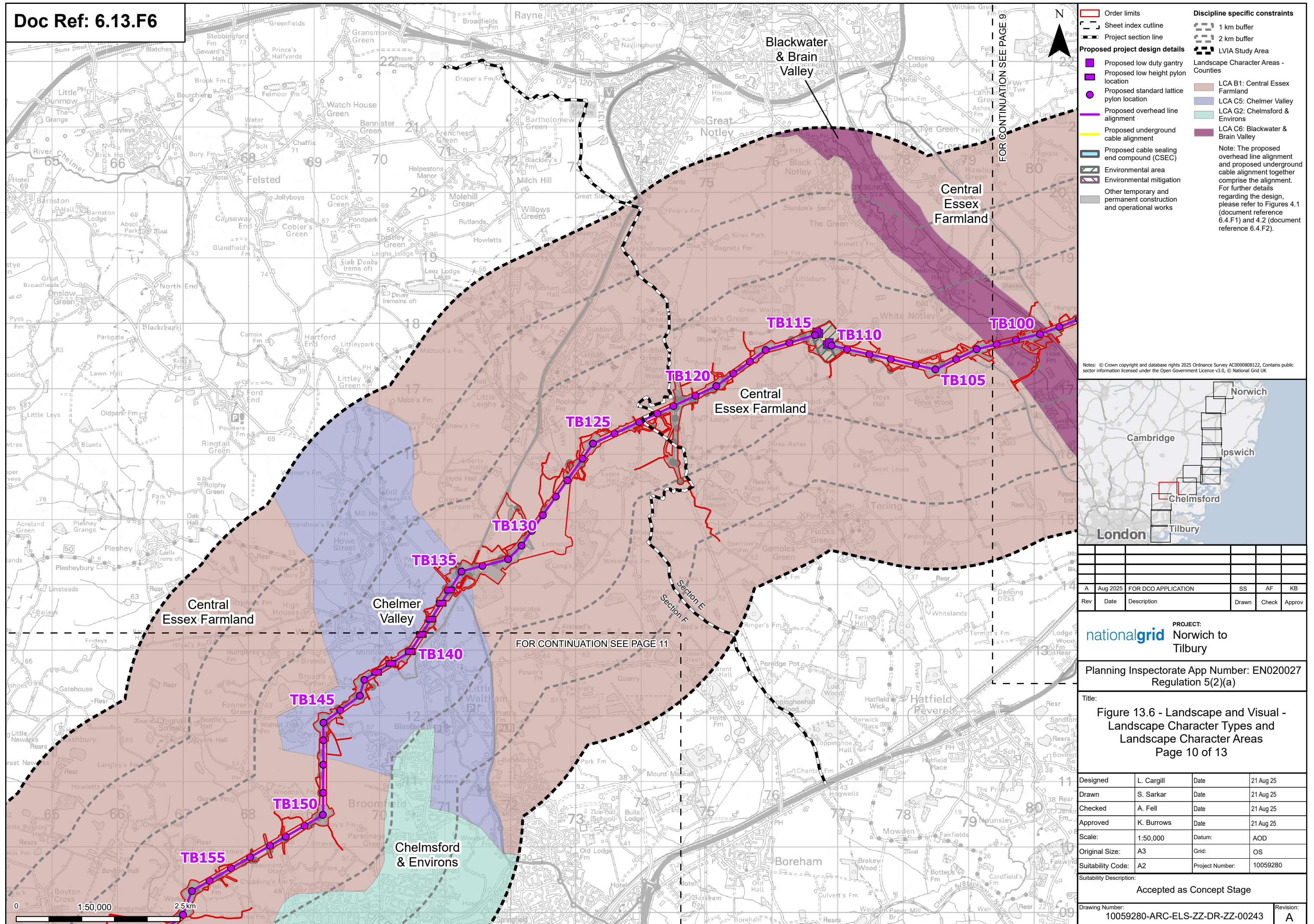
Planning Inspectorate App Number: EN020027
Regulation 5(2)(a)

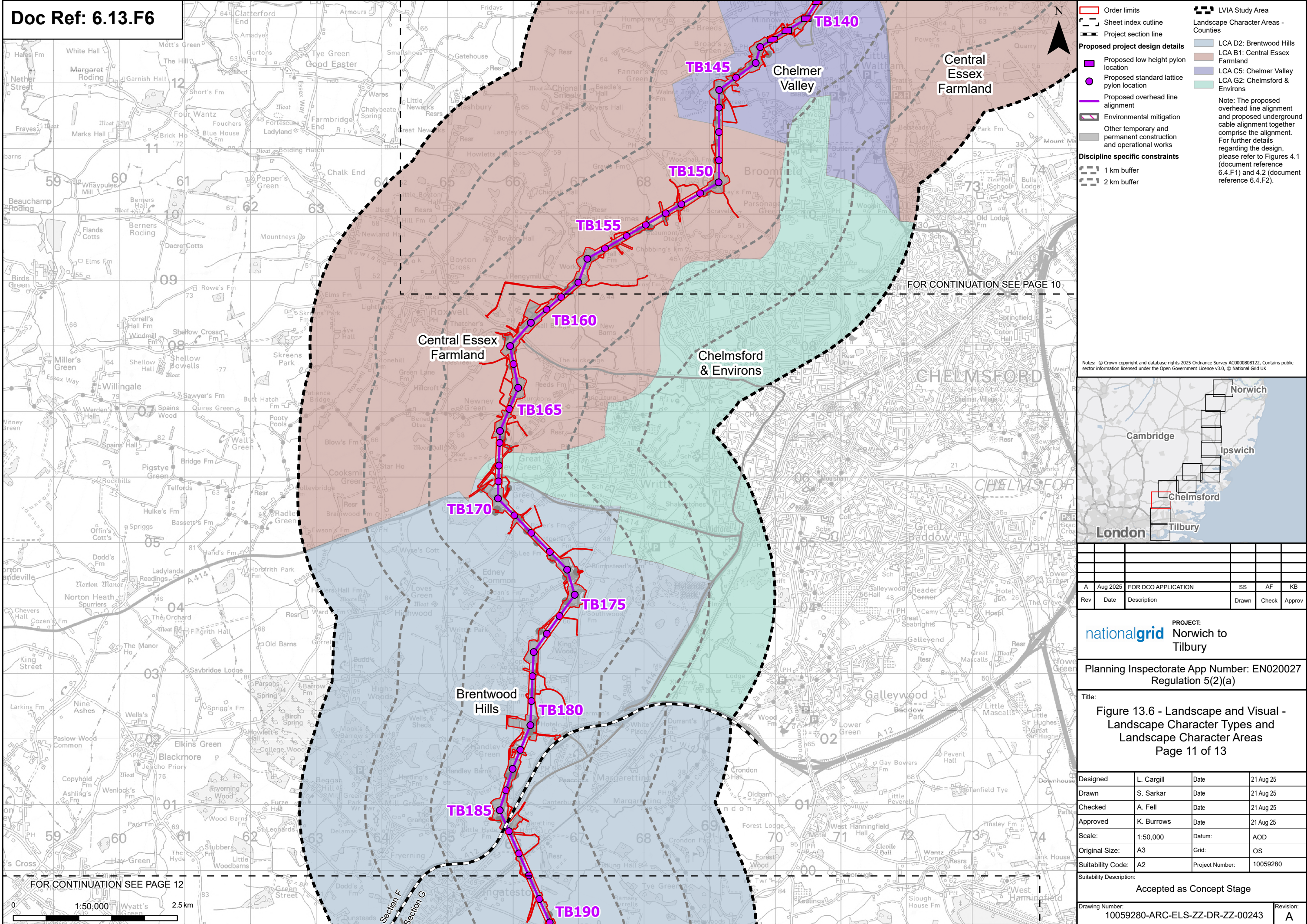
Title:
Figure 13.6 - Landscape and Visual -
Landscape Character Types and
Landscape Character Areas
Page 8 of 13

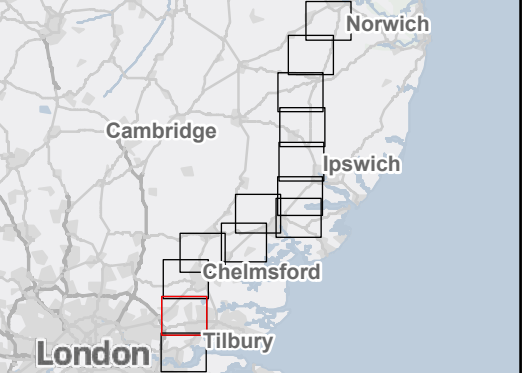
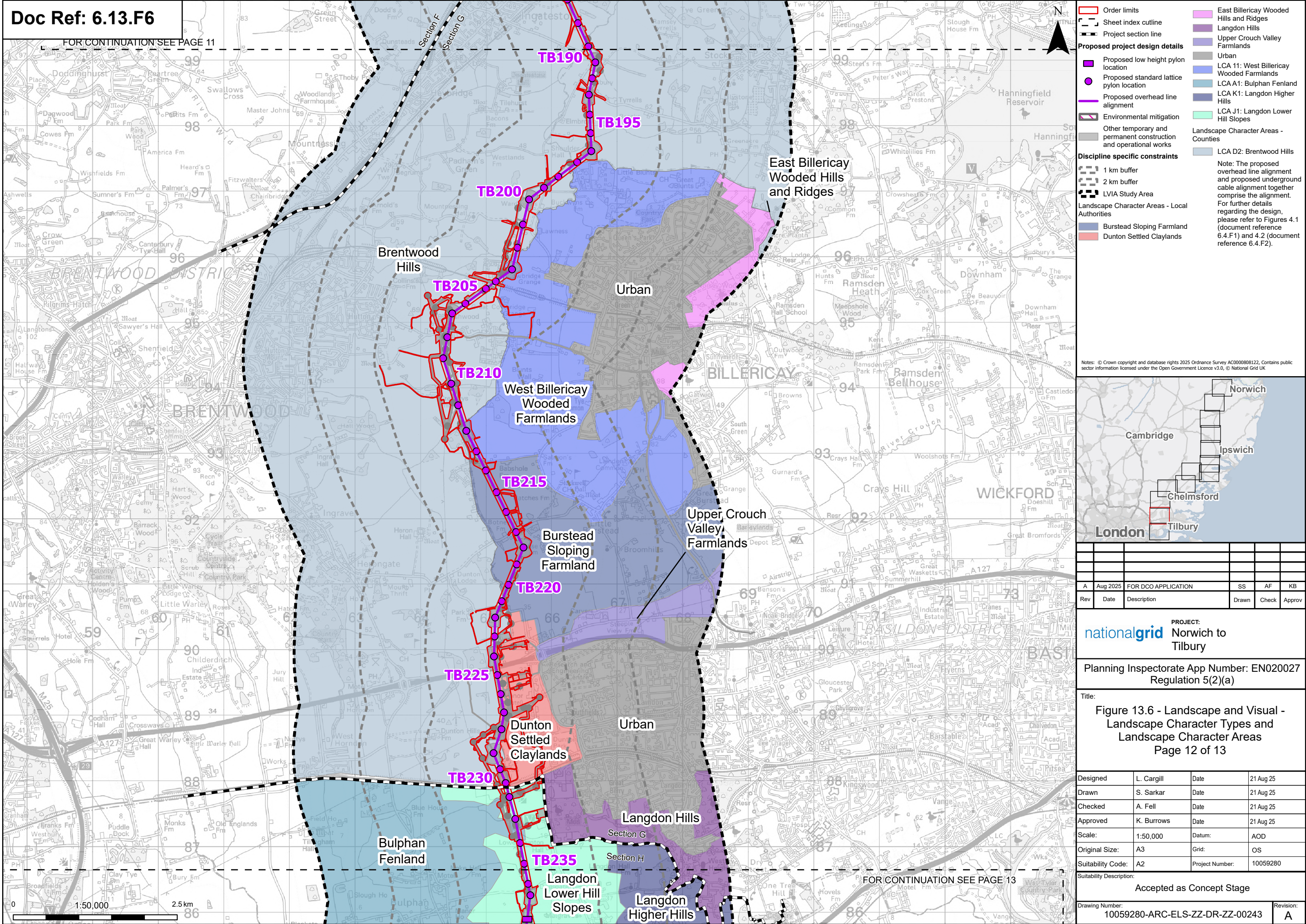
Designed	L. Cargill	Date	21 Aug 25
Drawn	S. Sarkar	Date	21 Aug 25
Checked	A. Fell	Date	21 Aug 25
Approved	K. Burrows	Date	21 Aug 25
Scale:	1:50,000	Datum:	AOD
Original Size:	A3	Grid:	OS
Suitability Code:	A2	Project Number:	10059280

Suitability Description:	
Accepted as Concept Stage	
Drawing Number:	Revision:
10059280-ARC-ELS-ZZ-DR-ZZ-00243	A









A	Aug 2025	FOR DCO APPLICATION	SS	AF
Rev	Date	Description	Drawn	Check
			KB	Approv

PROJECT:

Norwich to Tilbury

Planning Inspectorate App Number: EN020027
Regulation 5(2)(a)

Title:

Figure 13.6 - Landscape and Visual -
Landscape Character Types and
Landscape Character Areas
Page 12 of 13

Designed	L. Cargill	Date	21 Aug 25
Drawn	S. Sarkar	Date	21 Aug 25
Checked	A. Fell	Date	21 Aug 25
Approved	K. Burrows	Date	21 Aug 25
Scale:	1:50,000	Datum:	AOD
Original Size:	A3	Grid:	OS
Suitability Code:	A2	Project Number:	10059280

Suitability Description:

Accepted as Concept Stage

Drawing Number:
10059280-ARC-ELS-ZZ-DR-ZZ-00243

Revision:
A

